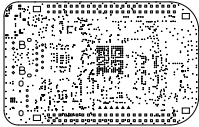


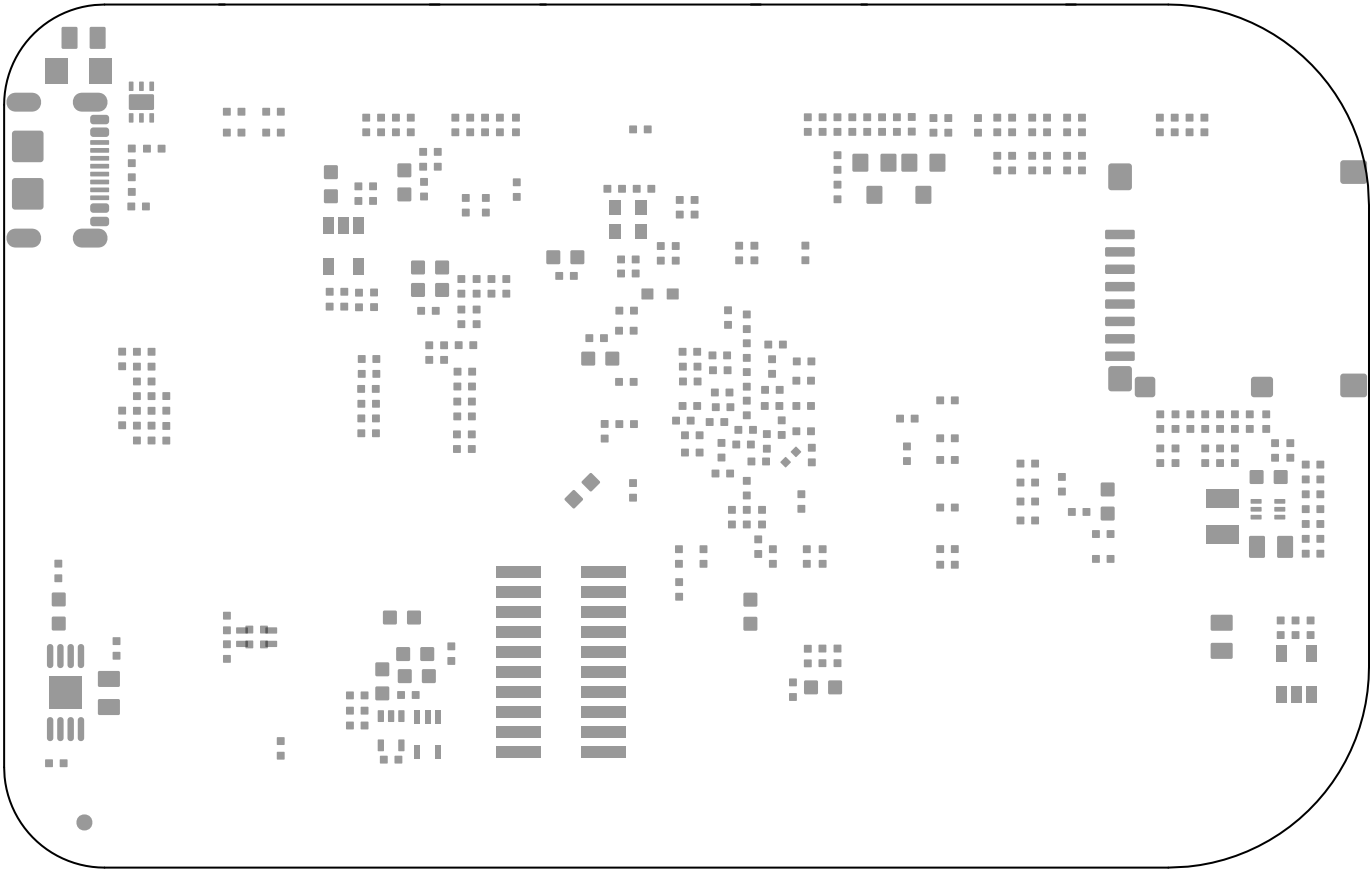
LAYER STACK-UP - ALL DIMENSIONS IN INCHES				
		50µm SINGLE ENDED IMPEDANCE CONTROL ±/- 10%	20µm DIFFERENTIAL IMPEDANCE CONTROL ±/- 10%	100µm DIFFERENTIAL IMPEDANCE CONTROL ±/- 10%
LAYER#	COPPER WEIGHT (oz)	TRACE WIDTH	TRACE WIDTH / SPACE	TRACE WIDTH / SPACE
LAYER 1 - PRIMARY SIDE - SIGNAL	HALF-PLATING	4.75	4.5/6.5	3.75/7.25
LAYER 2 - GROUND PLANE	1	4.75		
LAYER 3 - SPLIT POWER PLANE	1	4.75		
LAYER 4 - SECONDARY SIDE - SIGNAL	HALF-PLATING	4.75	4.5/6.5	3.75/7.25



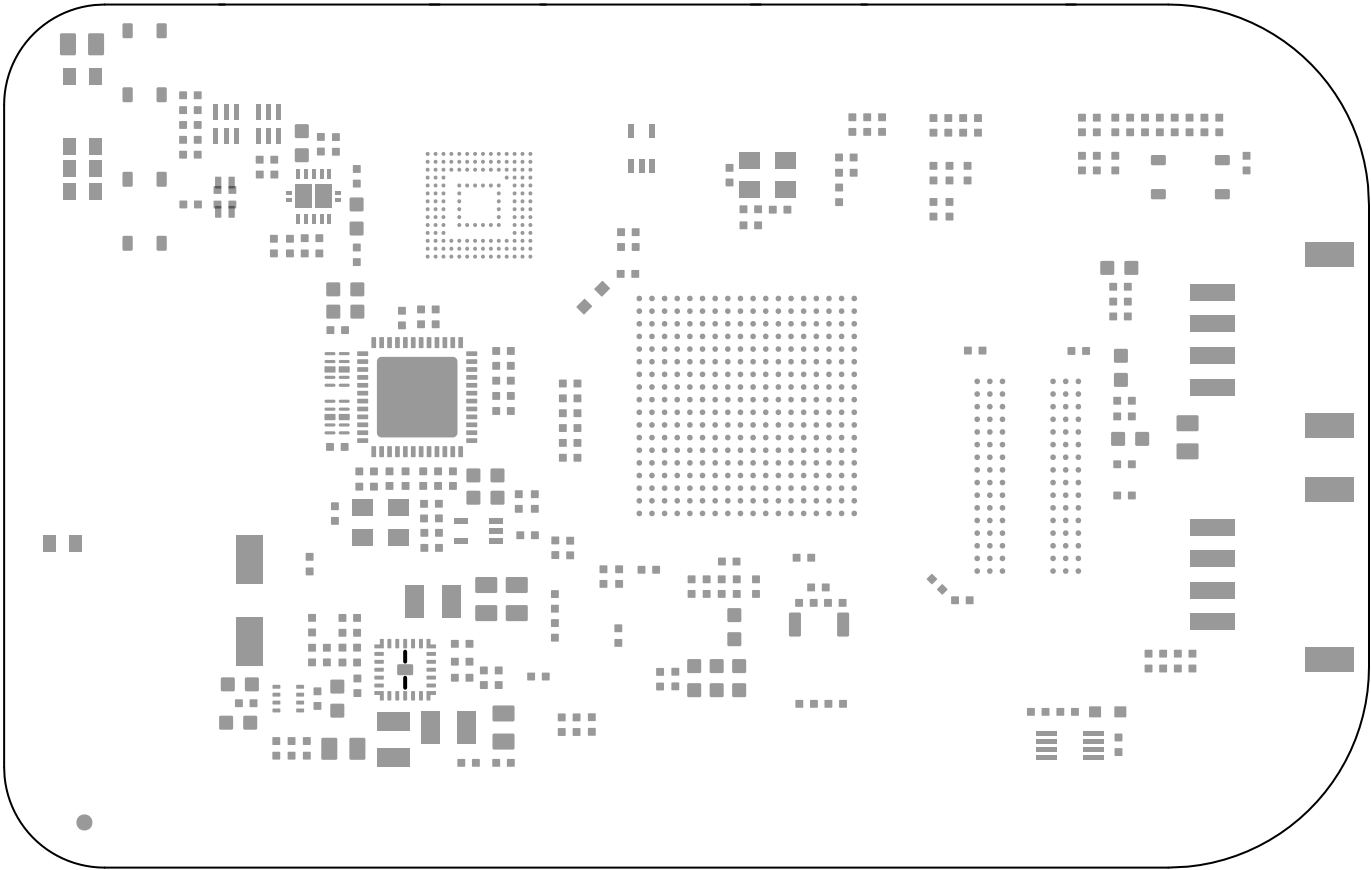
	SEED
	BBG Eco V1.0
	DATE: 6/10/2025

SLOT HOLES: TOP to BOTTOM				
ALL UNITS ARE IN MILS				
FIGURE	FINISHED SIZE	TOLERANCE DRILL	PLATED	QTY
-	51.18x19.69	+0.0/-0.0	PLATED	4
TOTAL HOLES:				4

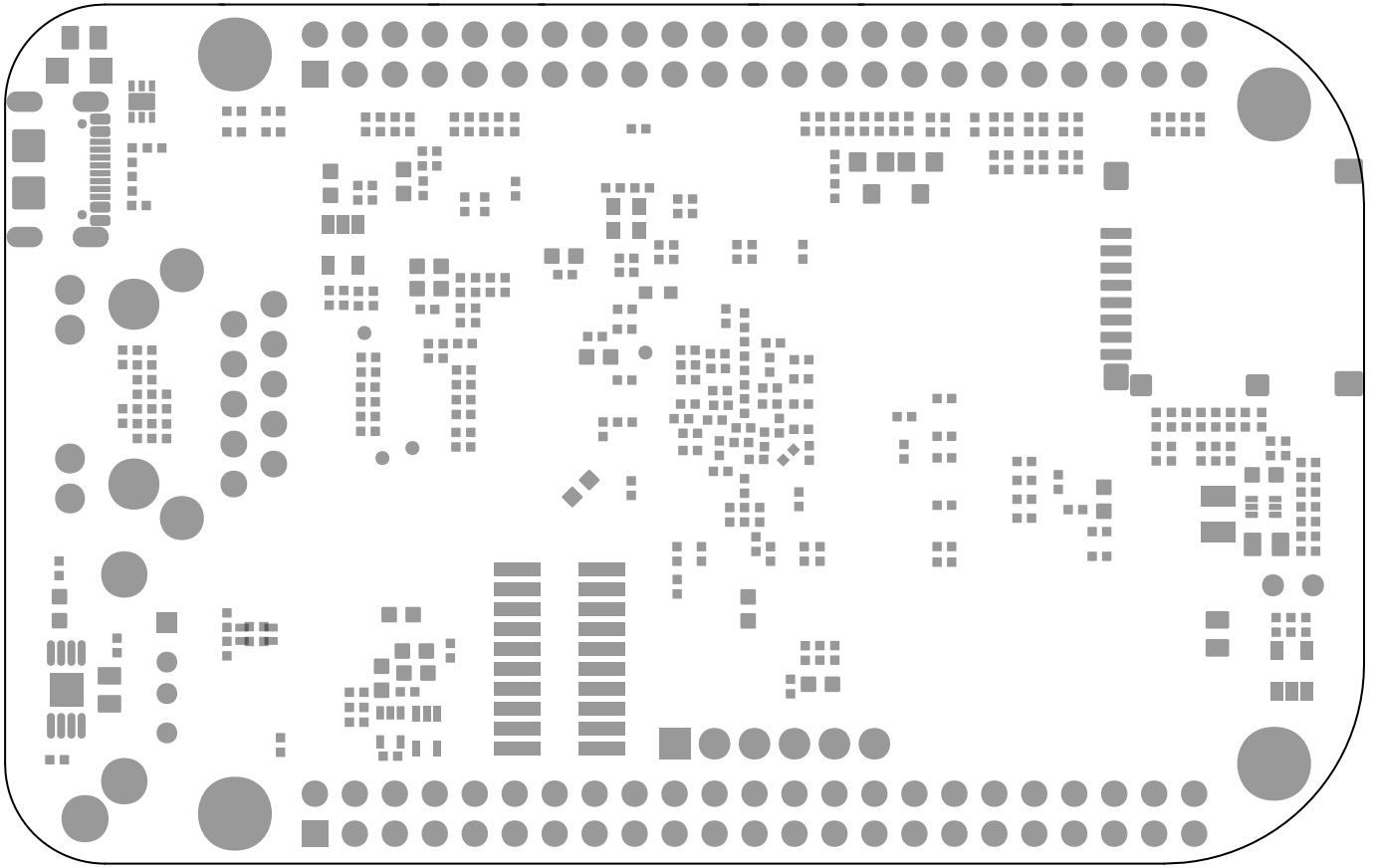
DRILL CHART: TOP to BOTTOM				
ALL UNITS ARE IN MILS				
FIGURE	FINISHED SIZE	TOLERANCE DRILL	PLATED	QTY
.	8.0	+0.0/-0.0	PLATED	1174
*	35.0	+3.0/-3.0	PLATED	90
+	35.0	+3.0/-3.0	PLATED	2
*	35.43	+0.0/-0.0	PLATED	10
*	36.0	+0.0/-0.0	PLATED	4
+	41.34	+0.0/-0.0	PLATED	4
+	43.31	+0.0/-0.0	PLATED	6
o	66.93	+0.0/-0.0	PLATED	2
o	92.0	+0.0/-0.0	PLATED	2
□	125.0	+3.0/-3.0	PLATED	4
+	23.62	+0.0/-0.0	NON-PLATED	2
A	80.0	+0.0/-0.0	NON-PLATED	4
B	127.95	+0.0/-0.0	NON-PLATED	2
TOTAL HOLES:				1306



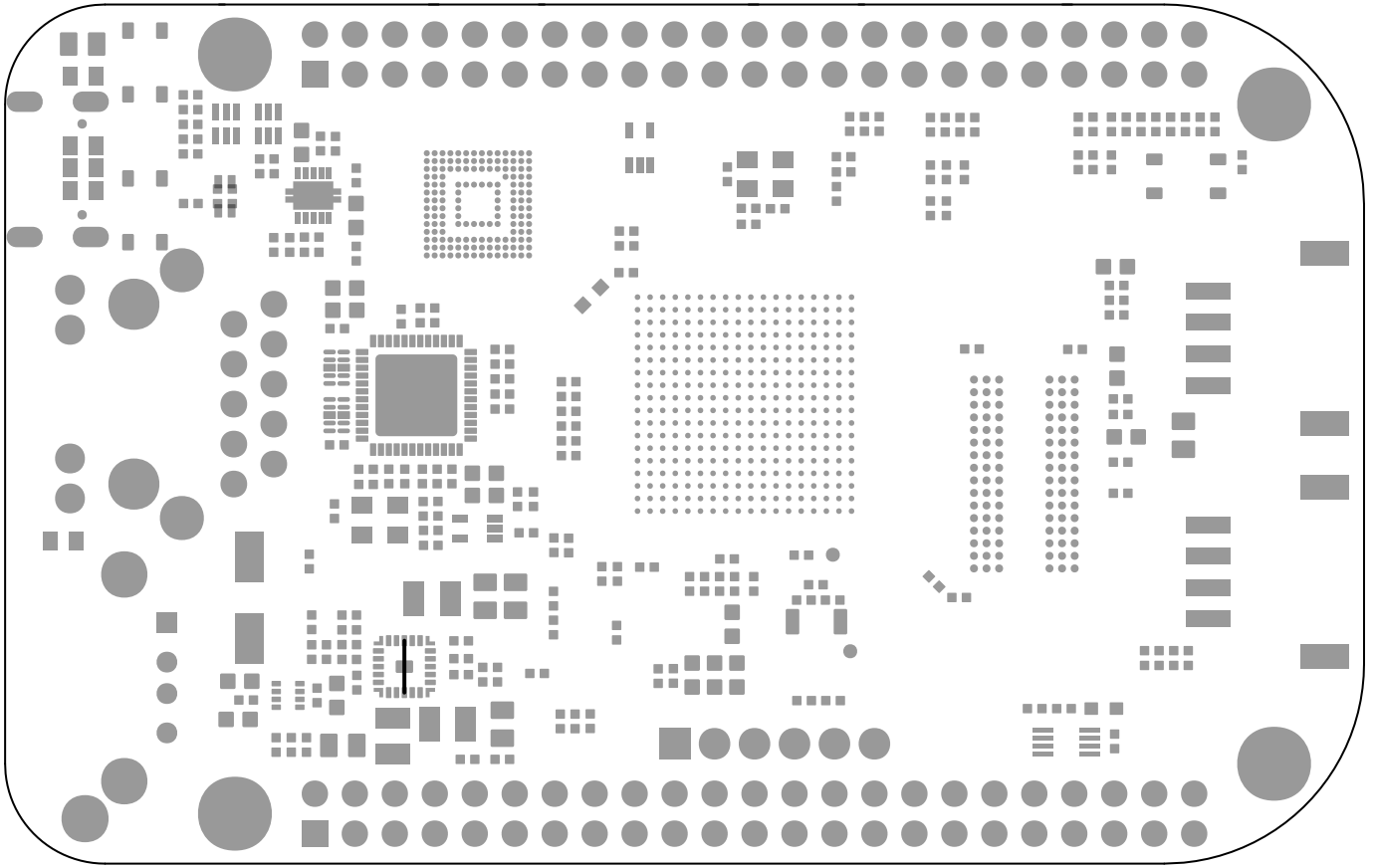
	SEED	
	SPS	BBG Eco V1.0
	DATE : 6 / 10 / 2025	



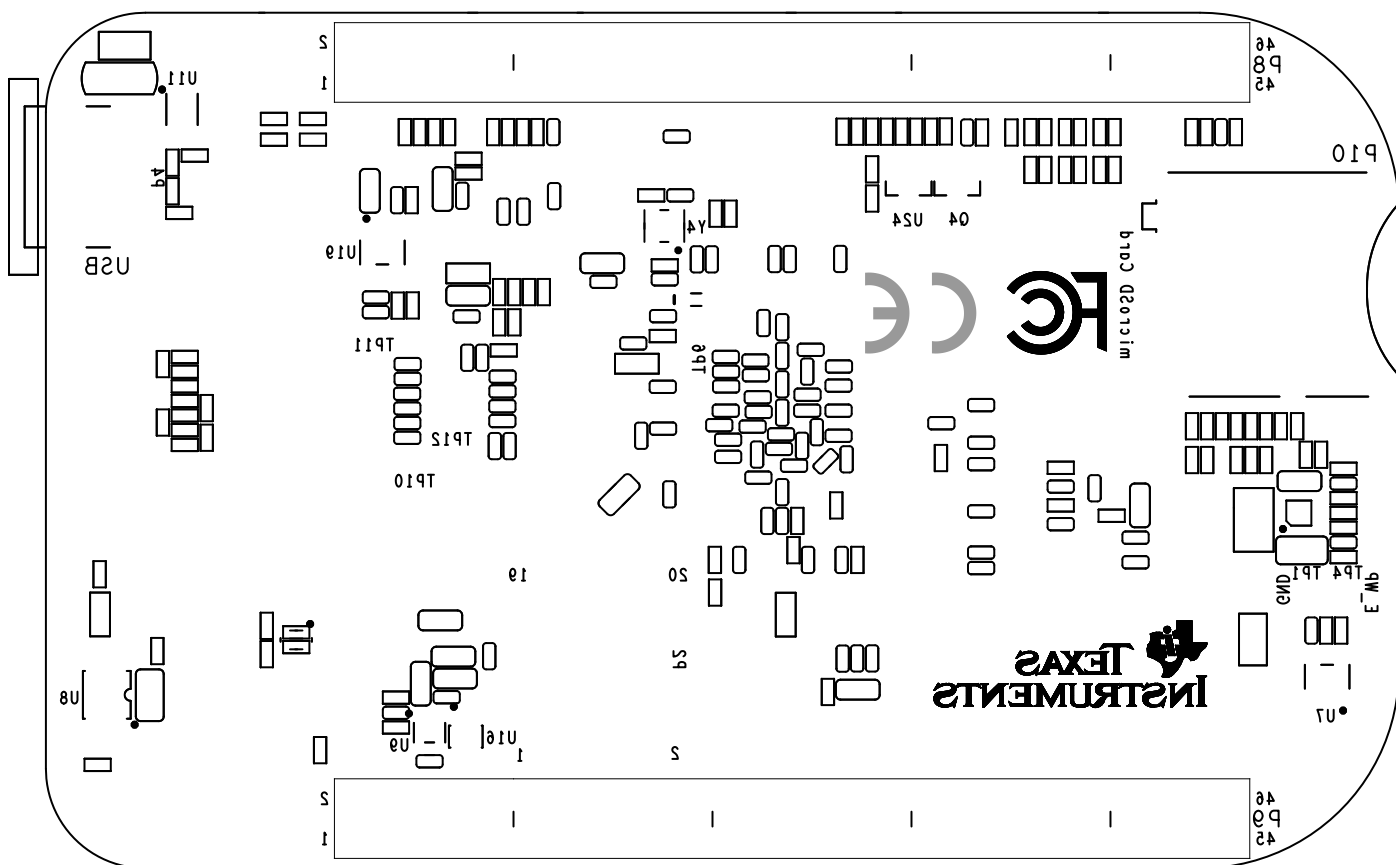
	SEED	
	SPC	BBG Eco V1.0
	DATE : 6/10/2025	



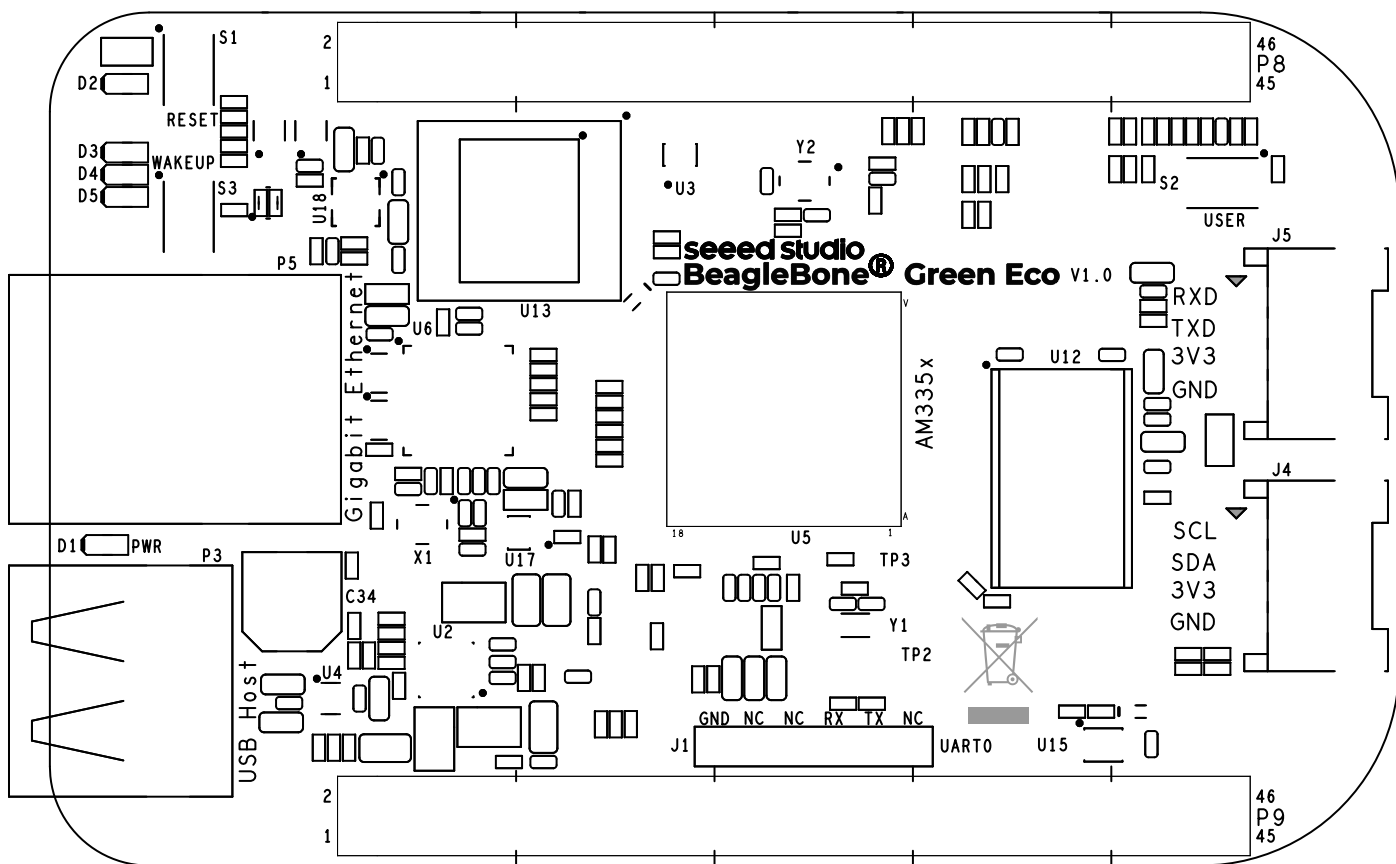
	SEED	
	SMS	BBG Eco V1.0
	DATE : 6 / 10 / 2025	



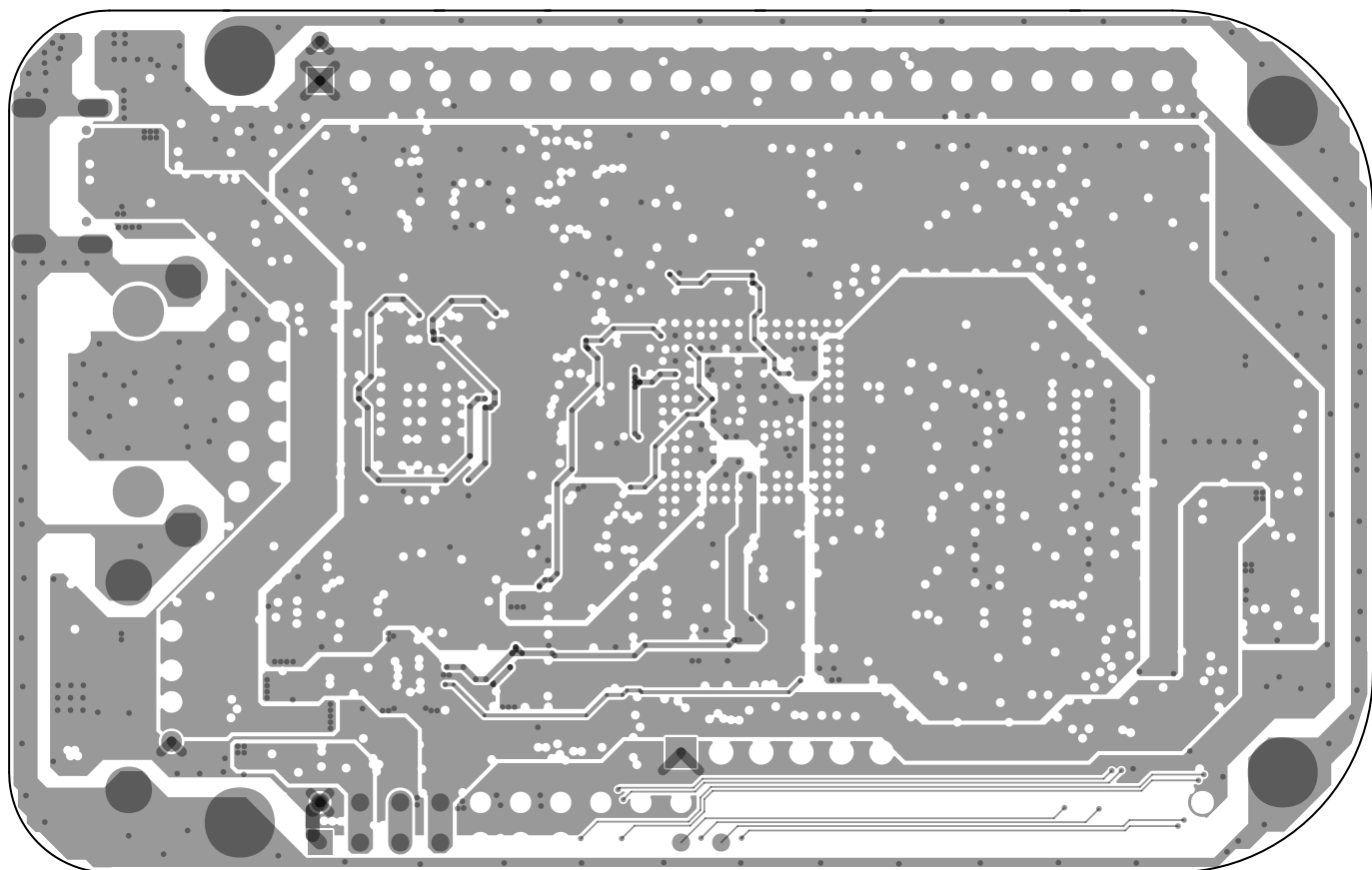
	SEED	
	SMC	BBG Eco V1.0
	DATE : 6 / 10 / 2025	



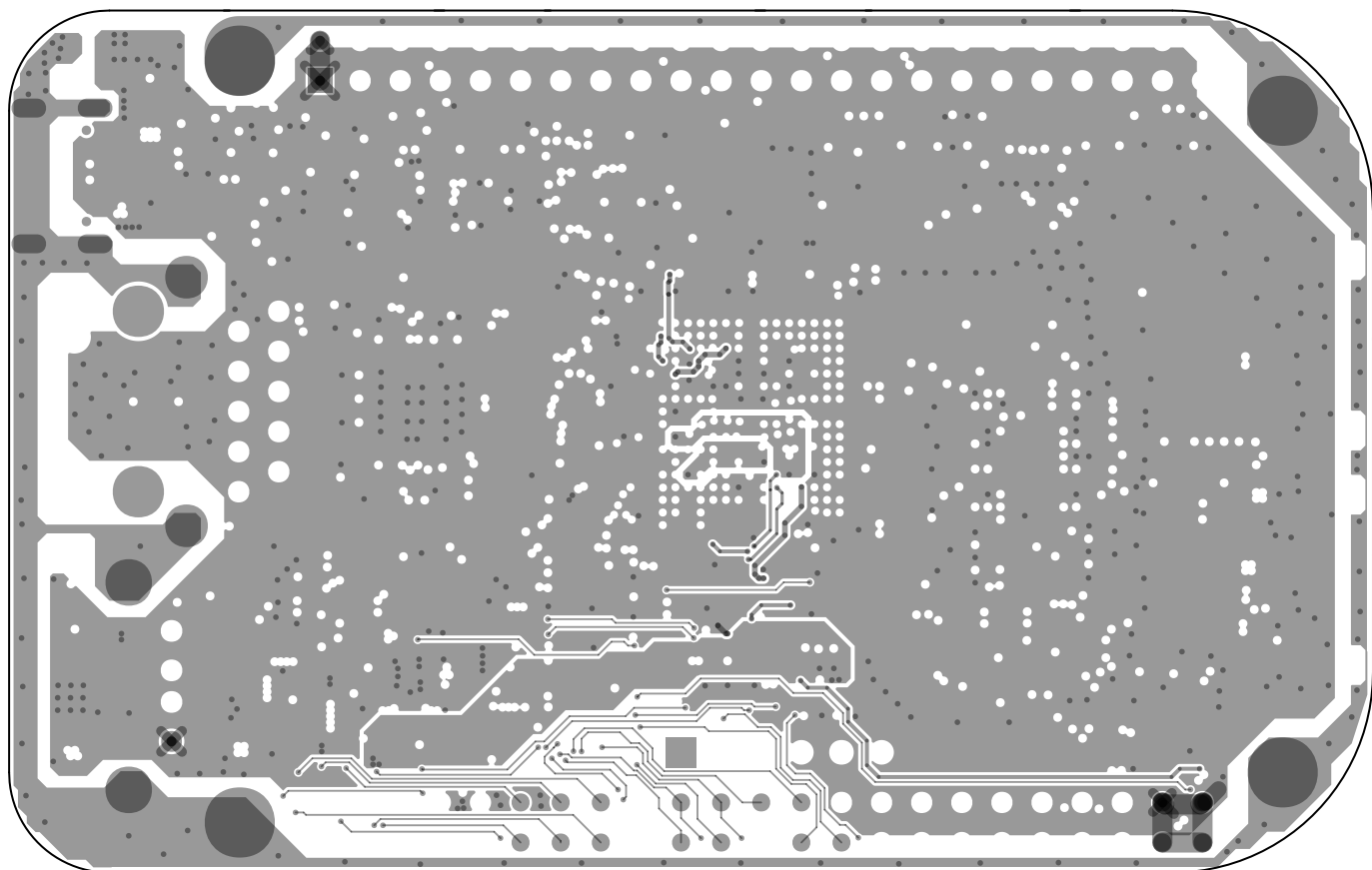
	SEED	
	BSLK	BBG Eco V1.0
	DATE : 6/10/2025	



	SEEED	
	TSLK	BBG Eco V1.0
	DATE : 6/10/2025	



	SEED	
	LAYER 3 POWER	BBG Eco V1.0
	DATE : 6/10/2025	

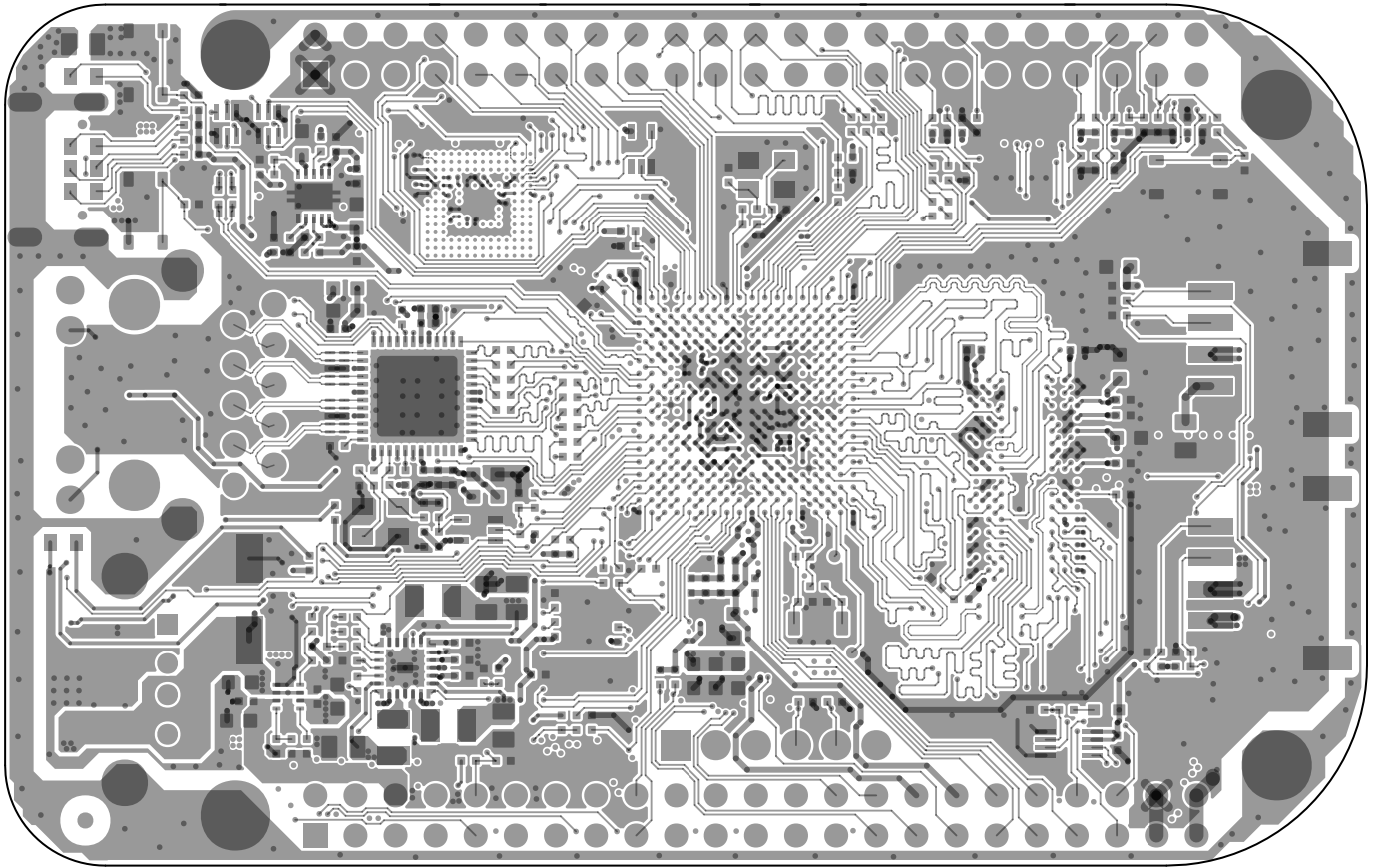


SEED

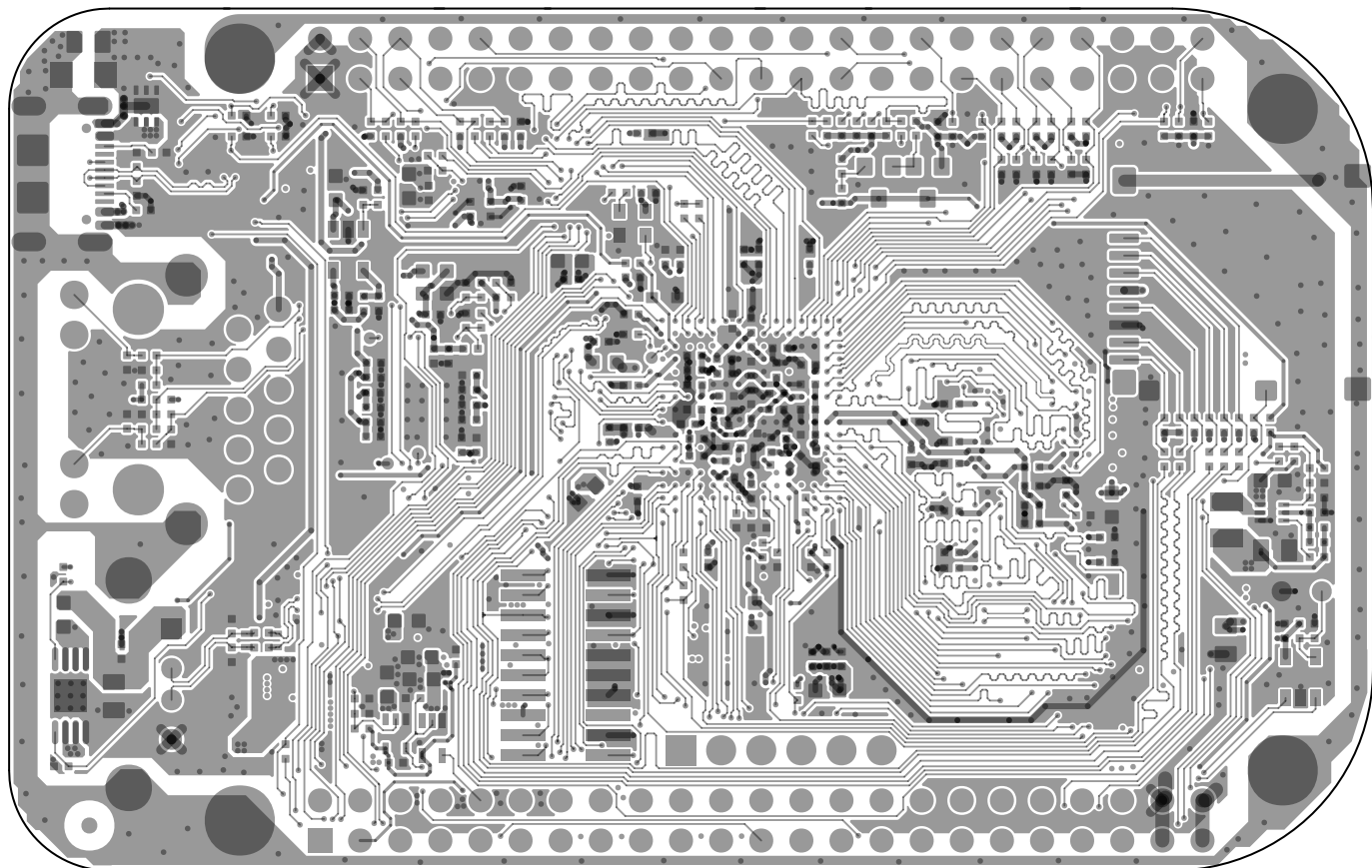
LAYER 2
GROUND

BBG Eco V1.0

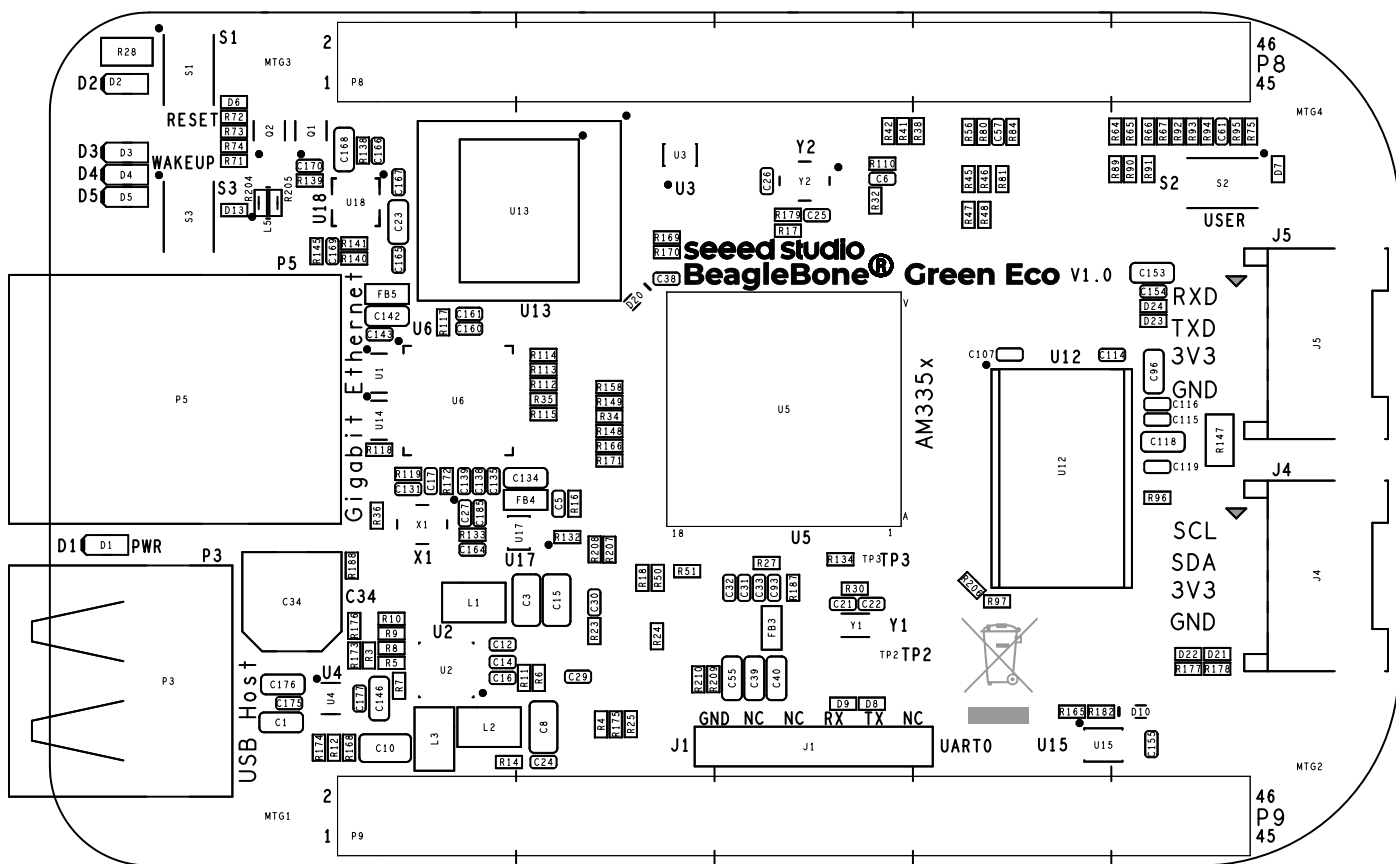
DATE : 6/10/2025



	SEED	
	LAYER 1 COMPONENT	BBG Eco V1.0
	DATE : 6/10/2025	



	SEED	
	LAYER 4 SOLDER	BBG Eco V1.0
	DATE : 6/10/2025	



SEEED

TSLK

BBG Eco V1.0

DATE : 6/10/2025

